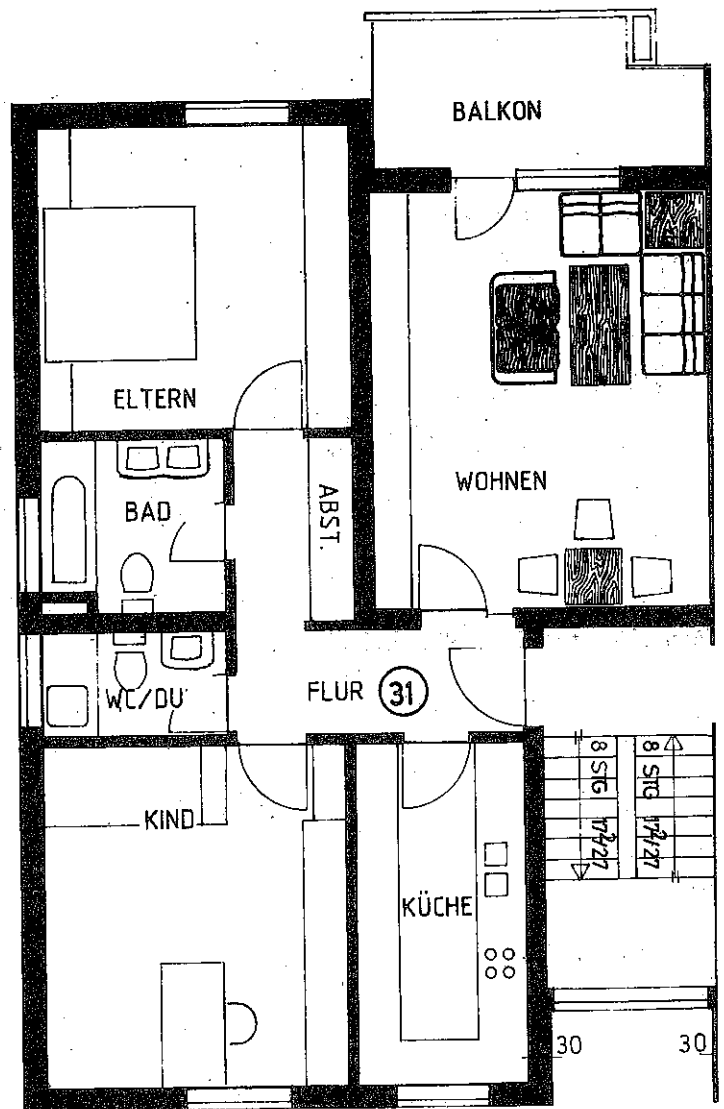


10	2,00	30	5,51	24	4,76	24	1,31
875	30	5,51	24	1,385	115	4,51	30
30	4,01	115	2,385	115	1,385	4,625	30
30	4,01	115	2,26	24	1,385	4,51	30
			13,235				



29/7

30	4,135	30	4,45	24
30	2,51	115	1,51	24
30	2,51	115	3,76	24
30	4,01	115	2,26	24
				18,6